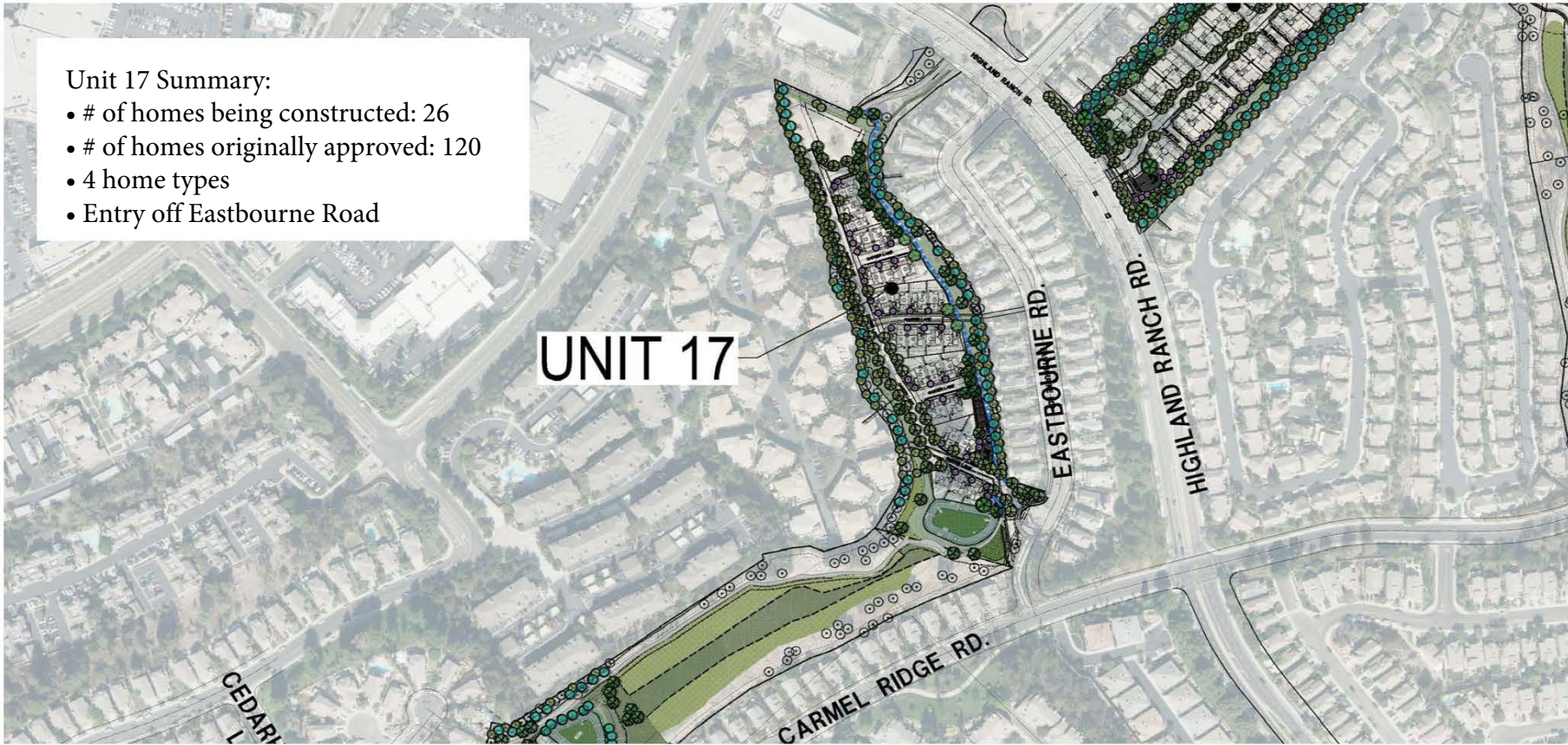


Unit 17 Summary:

- # of homes being constructed: 26
- # of homes originally approved: 120
- 4 home types
- Entry off Eastbourne Road

UNIT 17



THE TRAILS AT CARMEL MOUNTAIN RANCH

SUBSTANTIAL CONFORMANCE REVIEW (SCR) - BUILDING



elevationA- SPANISH

SCALE: 1/4" = 1'-0"



elevationC- CONTEMPORARY

SCALE: 1/4" = 1'-0"



elevationD- FARMHOUSE

SCALE: 1/4" = 1'-0"



colorado // 731 southpark dr, suite 8
 littleton, co 80120 / 303.683.7231
 california // 2943 pullman st, suite A
 santa ana, ca 92705 / 949.553.8919

PREPARED BY: NAME: PROJECT DESIGN CONSULTANTS	REVISION 14: _____
ADDRESS: 701 'B' STREET, SUITE 800 SAN DIEGO, CALIFORNIA 92101	REVISION 13: _____
PHONE #: (619) 235-6471	REVISION 12: _____
PROJECT ADDRESS: 14050 CARMEL RIDGE ROAD SAN DIEGO, CALIFORNIA 92128	REVISION 11: _____
PROJECT NAME: THE TRAILS AT CARMEL MOUNTAIN RANCH SUBSTANTIAL CONFORMANCE REVIEW-BUILDING	REVISION 10: _____
ORIGINAL DATE: FEBRUARY 18, 2022	REVISION 09: _____
SHEET TITLE: ELEVATIONS/ PRODUCT G PLAN 1	REVISION 08: _____
DEP # _____	REVISION 07: _____
	REVISION 06: _____
	REVISION 05: _____
	REVISION 04: _____
	REVISION 03: _____
	REVISION 02: _____
	REVISION 01: _____
	SHEET AG 3.1- 137 OF 155

THE TRAILS AT CARMEL MOUNTAIN RANCH

SUBSTANTIAL CONFORMANCE REVIEW (SCR) - BUILDING



elevationA- SPANISH

SCALE: 1/4" = 1'-0"



elevationB- BALLPARK

SCALE: 1/4" = 1'-0"



elevationC- CONTEMPORARY

SCALE: 1/4" = 1'-0"



colorado // 731 southpark dr, suite 8
littleton, co 80120 / 303.683.7231
california // 2943 pullman st, suite A
santa ana, ca 92705 / 949.553.8919

PREPARED BY: NAME: PROJECT DESIGN CONSULTANTS	REVISION 14: _____
ADDRESS: 701 'B' STREET, SUITE 800 SAN DIEGO, CALIFORNIA 92101	REVISION 13: _____
PHONE #: (619) 235-6471	REVISION 12: _____
PROJECT ADDRESS: 14050 CARMEL RIDGE ROAD SAN DIEGO, CALIFORNIA 92128	REVISION 11: _____
PROJECT NAME: THE TRAILS AT CARMEL MOUNTAIN RANCH SUBSTANTIAL CONFORMANCE REVIEW-BUILDING	REVISION 10: _____
ORIGINAL DATE: FEBRUARY 18, 2022	REVISION 09: _____
SHEET TITLE: ELEVATIONS/ PRODUCT G PLAN 2	REVISION 08: _____
	REVISION 07: _____
	REVISION 06: _____
	REVISION 05: _____
	REVISION 04: _____
	REVISION 03: _____
	REVISION 02: _____
	REVISION 01: _____
	SHEET AG 8.1- 142 OF 155
	DEP # _____

THE TRAILS AT CARMEL MOUNTAIN RANCH

SUBSTANTIAL CONFORMANCE REVIEW (SCR) - BUILDING



elevationA- SPANISH

SCALE: 1/4" = 1'-0"



elevationB- BALLPARK

SCALE: 1/4" = 1'-0"



elevationD- FARMHOUSE

SCALE: 1/4" = 1'-0"



colorado // 731 southpark dr. suite 8
 littleton, co 80120 / 303.683.7231
 california // 2943 pullman st. suite A
 santa ana, ca 92705 / 949.553.8919

PREPARED BY: NAME: PROJECT DESIGN CONSULTANTS	REVISION 14: _____
ADDRESS: 701 'B' STREET, SUITE 800 SAN DIEGO, CALIFORNIA 92101	REVISION 13: _____
PHONE #: (619) 235-6471	REVISION 12: _____
PROJECT ADDRESS: 14050 CARMEL RIDGE ROAD SAN DIEGO, CALIFORNIA 92128	REVISION 11: _____
PROJECT NAME: THE TRAILS AT CARMEL MOUNTAIN RANCH SUBSTANTIAL CONFORMANCE REVIEW-BUILDING	REVISION 10: _____
ORIGINAL DATE: FEBRUARY 18, 2022	REVISION 09: _____
SHEET TITLE: ELEVATIONS/ PRODUCT G PLAN 3	REVISION 08: _____
DEP # _____	REVISION 07: _____
	REVISION 06: _____
	REVISION 05: _____
	REVISION 04: _____
	REVISION 03: _____
	REVISION 02: _____
	REVISION 01: _____

THE TRAILS AT CARMEL MOUNTAIN RANCH

SUBSTANTIAL CONFORMANCE REVIEW (SCR) - BUILDING



elevationA- SPANISH

SCALE: 1/4" = 1'-0"



elevationB- BALLPARK

SCALE: 1/4" = 1'-0"



elevationC- CONTEMPORARY

SCALE: 1/4" = 1'-0"



colorado // 731 southpark dr. suite 8
 littleton, co 80120 / 303.683.7231
 california // 2943 pullman st. suite A
 santa ana, ca 92705 / 949.553.8919

PREPARED BY: NAME: PROJECT DESIGN CONSULTANTS	REVISION 14: _____
ADDRESS: 701 'B' STREET, SUITE 800 SAN DIEGO, CALIFORNIA 92101	REVISION 13: _____
PHONE #: (619) 235-6471	REVISION 12: _____
PROJECT ADDRESS: 14050 CARMEL RIDGE ROAD SAN DIEGO, CALIFORNIA 92128	REVISION 11: _____
PROJECT NAME: THE TRAILS AT CARMEL MOUNTAIN RANCH SUBSTANTIAL CONFORMANCE REVIEW-BUILDING	REVISION 10: _____
ORIGINAL DATE: FEBRUARY 18, 2022	REVISION 09: _____
SHEET TITLE: ELEVATIONS/ PRODUCT G PLAN 4	REVISION 08: _____
	REVISION 07: _____
	REVISION 06: _____
	REVISION 05: _____
	REVISION 04: _____
	REVISION 03: _____
	REVISION 02: _____
	REVISION 01: _____
	SHEET AG18.1- 152 OF 155
	DEP # _____