

The Trails at Carmel Mountain Ranch

Community Workshop #3

Wednesday, October 12th, 2022

6:30 pm

Zoom Login Information

Join Zoom Meeting

<https://us02web.zoom.us/j/89449138016>

Agenda (Start Time 6:30 pm)

1. Introductions (City of San Diego and Team Members), 3 minutes
2. Project Background (Jonathan Frankel and Shannon Scoggins), 3 minutes
3. Project Schedule (Shannon Scoggins), 1 minute
4. Parks Area Plan (Rick Barrett), 2 minutes
5. Workshop #2 Results Summary (Rick Barrett), 3 minutes
6. Review of General Development Plans(Rick Barrett)
 1. Eastbourne Neighborhood Park, 8 minutes
 2. Shoal Creek Neighborhood Park, 8 minutes
 3. Walden Neighborhood Park, 8 minutes
7. Community Input on General Development Plans(Shannon Scoggins and Rick Barrett), 10 minutes
8. Closing and Next Steps (Shannon Scoggins and Rick Barrett), 3 minutes

Project Background

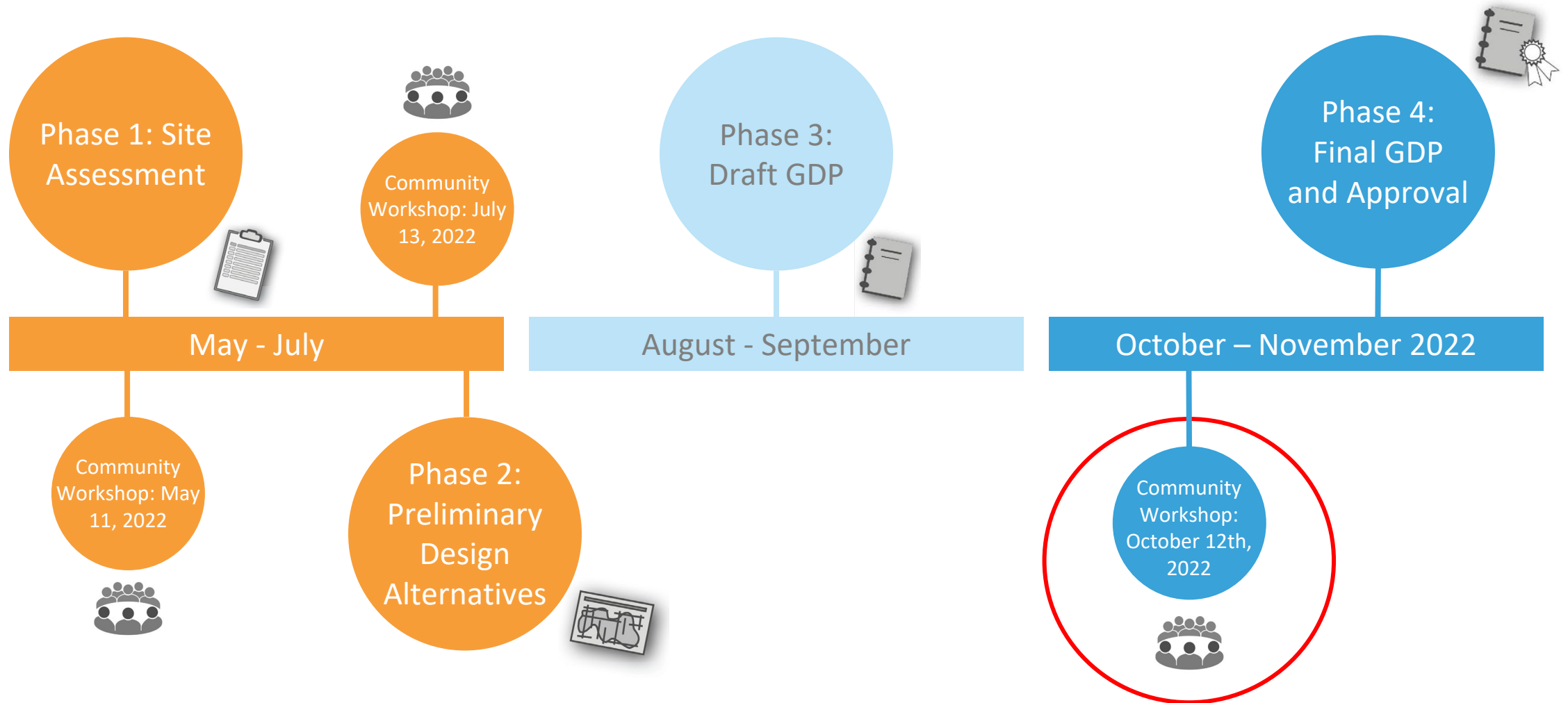
- **Development Permit Approvals**

- On September 14, 2021 the San Diego City Council approved the Trails at Carmel Mountain Ranch project which authorized the redevelopment of the former golf course
- This approval (MPDP No. 2366508; SDP No. 2366425) required the construction of new parks based on the anticipated total population increase as a result of the project.
- In total, 7.87 acres of new parkland is required. Three new public parks are proposed to meet this population-based park requirement.
- These parks will be connected by a network of approximately 5 miles of trails that will be accessible to the public.

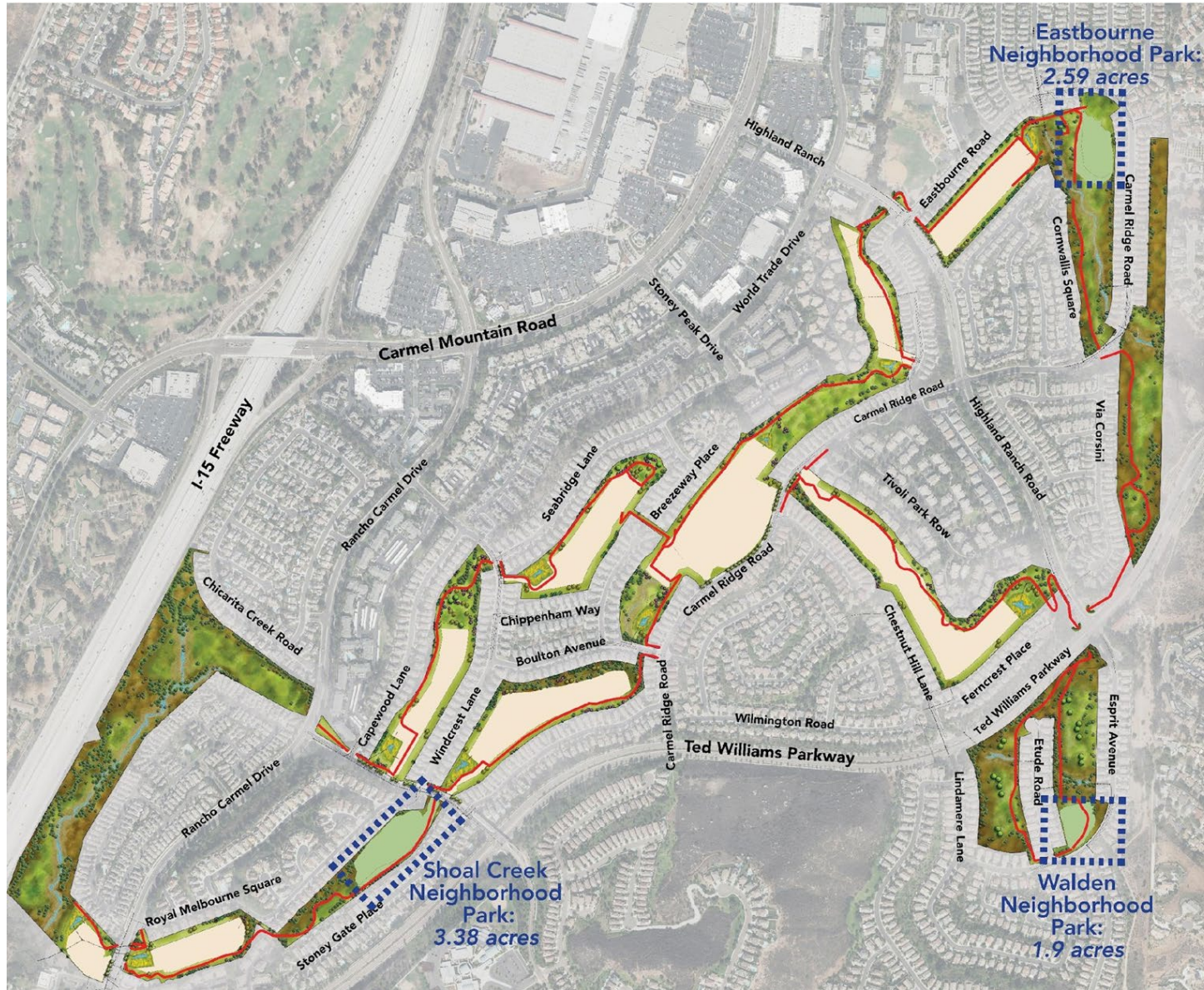
- **Community public input process**

- 3 Public workshops
- Council Policy 600-33
- General Development Plan Design Process

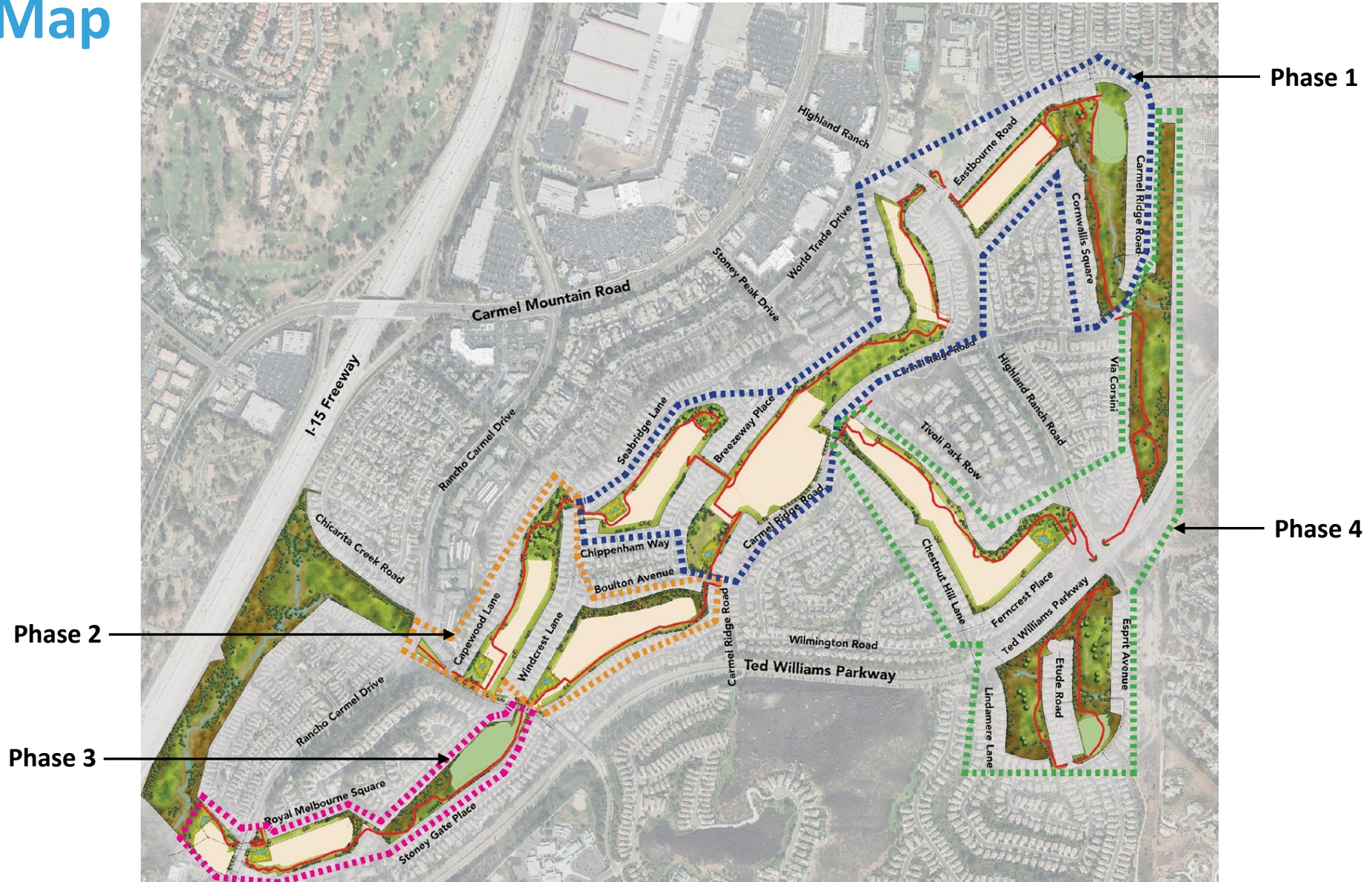
GDP Process



Area Map



Area Map



Eastbourne Neighborhood Park: Workshop #2 Summary

- Below is the polling question and results for Eastbourne Neighborhood Park. This includes both polling during the workshop and emails that were received subsequent to the workshop.

- Question:** Which of the following options do you prefer for Eastbourne Neighborhood Park?

Results:

- Alternative 1: 20 Votes
- Alternative 2: 33 Votes
- Hybrid/Combination: 3 Votes



Alternative 1



Alternative 2

Shoal Creek Neighborhood Park: Workshop #2 Summary

- Below is the polling question and results for Shoal Creek Neighborhood Park. This includes both polling during the workshop and emails that were received subsequent to the workshop.

- Question:** Which of the following options do you prefer for Shoal Creek Neighborhood Park?

Results:

- Alternative 1: 18 Votes
- Alternative 2: 16 Votes
- Hybrid/Combination: 6 Votes. Voters added through chat to have Alternative 2 with an added small dog park.



Alternative 1



Alternative 2

Walden Neighborhood Park: Workshop #2 Summary

- Below is the polling question and results for Walden Neighborhood Park. This includes both polling during the workshop and emails that were received subsequent to the workshop.

- **Question:** Which of the following options do you prefer for Walden Neighborhood Park?

Results:

- **Alternative 1:** 8 Votes
- **Alternative 2:** 17 Votes
- **Hybrid/Combination:** 2 Votes.



Alternative 1

Alternative 2

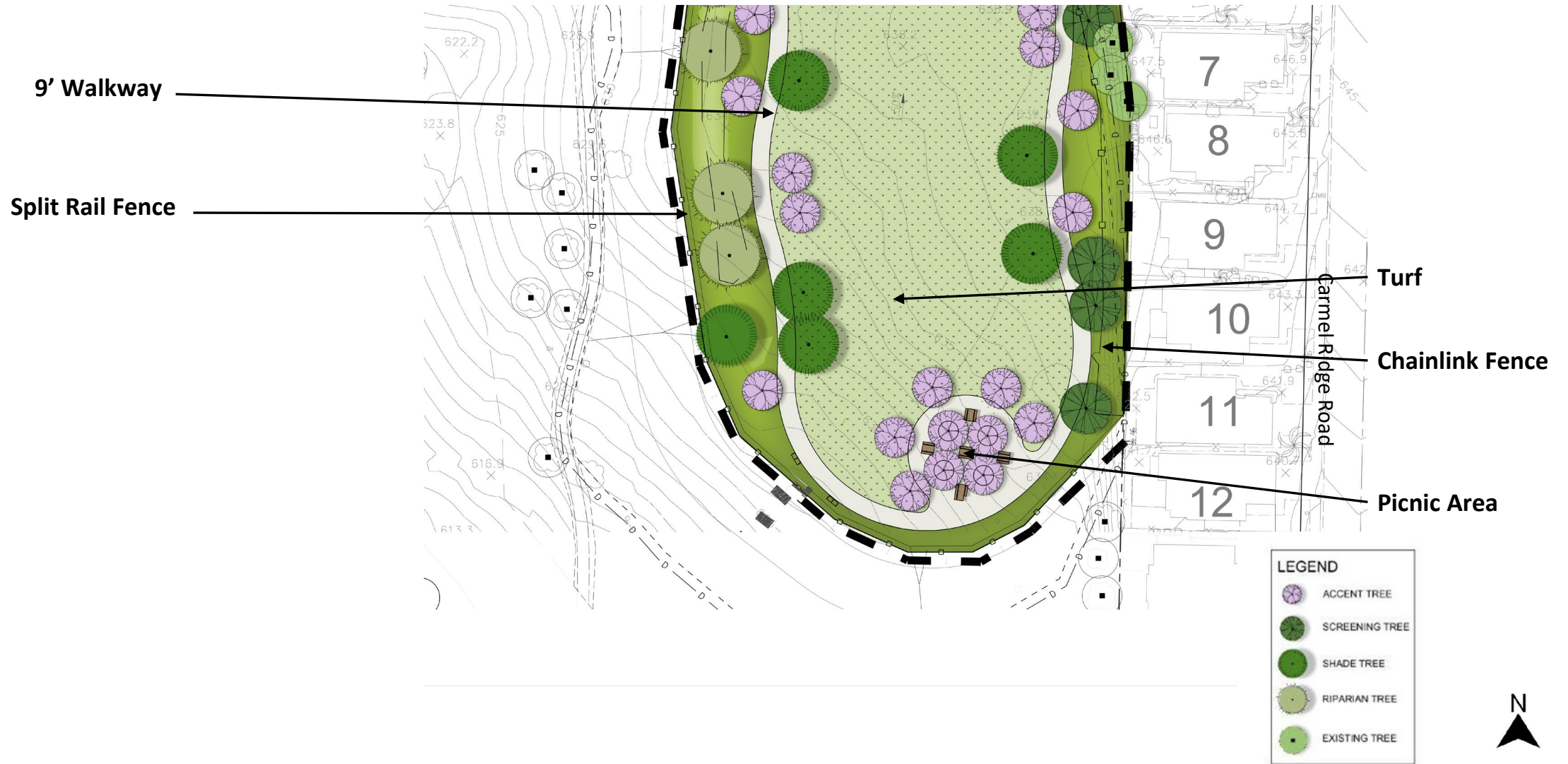
Eastbourne Neighborhood Park: General Development Plan



Eastbourne Neighborhood Park: General Development Plan



Eastbourne Neighborhood Park: General Development Plan



Eastbourne Neighborhood Park: Furnishings and Amenities



6' Picnic Table with Round Legs
92" Picnic Table with Round Legs
Outdoor Creations Inc.



108S - Square Court Game Table
Outdoor Creations Inc.



1500 - Table Tennis
Outdoor Creations Inc.



420 - Block Leg Bench
Outdoor Creations Inc.



300A - Family BBQ with
113 - Pedestal Table
Outdoor Creations Inc.



511 - Waste and Recycling Receptacle
Outdoor Creations Inc.



Model 3500D Water Fountain
Haws



Novo Arch Bike Rack
Burke

Eastbourne Neighborhood Park: Furnishings and Amenities



Pet Waste Station



3' Peeler Log Fence



4-6' Chainlink Fence



PS-022DF Playground Series Restroom
Public Restroom Company



SQR 36 Square Shade Structure
Poligon

Eastbourne Neighborhood Park: Furnishings and Amenities



Playground Equipment
Landscape Structures

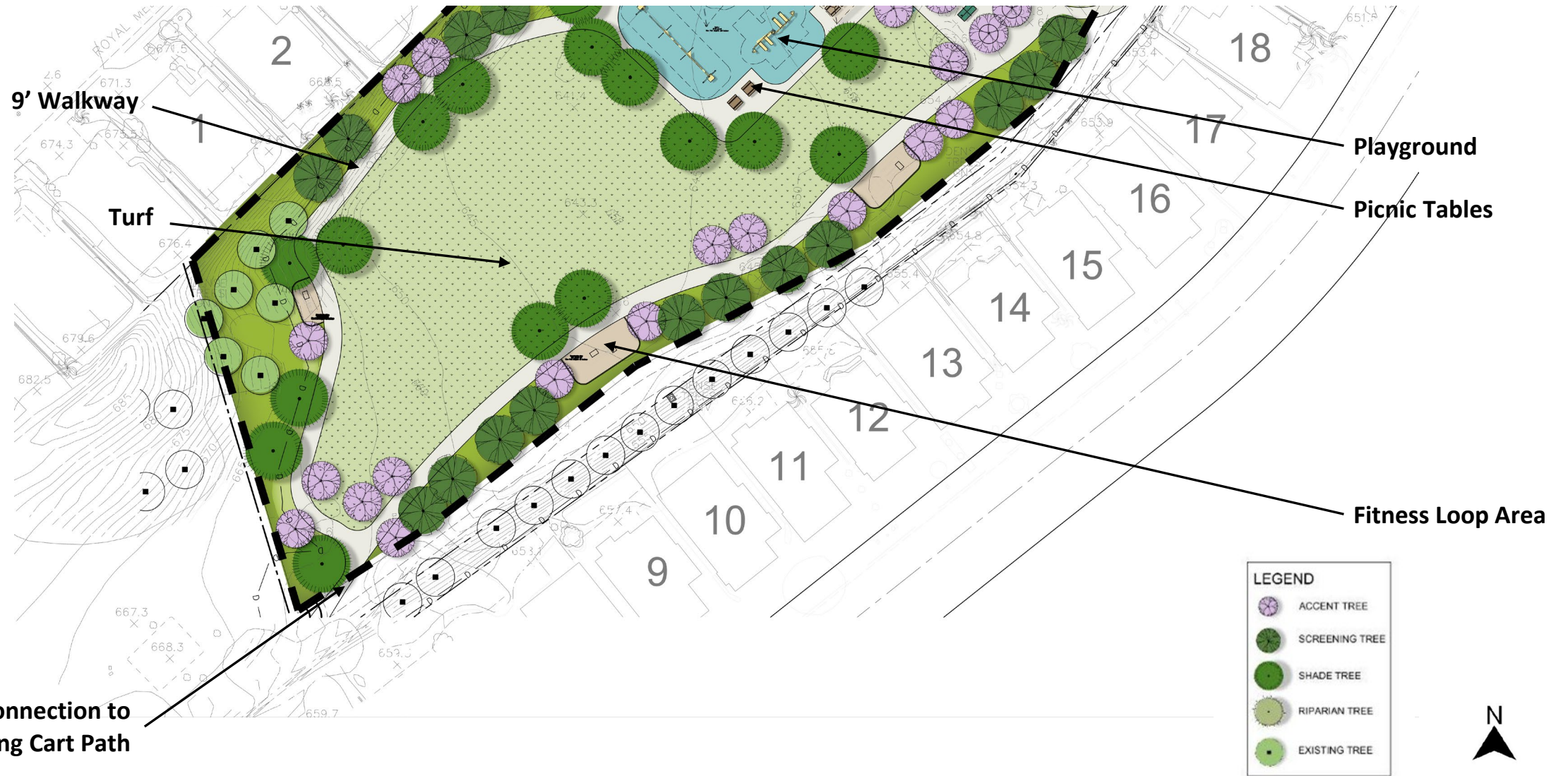
Shoal Creek Neighborhood Park: General Development Plan



Shoal Creek Neighborhood Park: General Development Plan



Shoal Creek Neighborhood Park: General Development Plan



Shoal Creek Neighborhood Park: Furnishings and Amenities



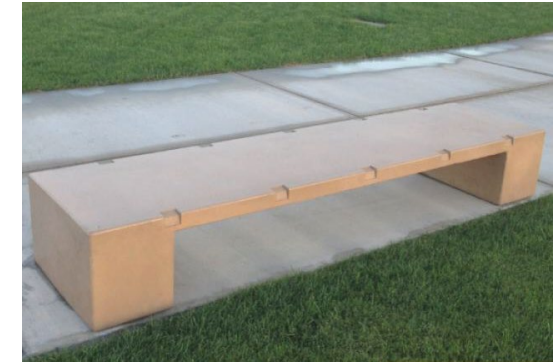
6' Picnic Table with Round Legs
92" Picnic Table with Round Legs
Outdoor Creations Inc.



108S - Square Court Game Table
Outdoor Creations Inc.



1500 - Table Tennis
Outdoor Creations Inc.



420 - Block Leg Bench
Outdoor Creations Inc.



300A - Family BBQ with
113 - Pedestal Table
Outdoor Creations Inc.



511 - Waste and Recycling Receptacle
Outdoor Creations Inc.



Model 3500D Water Fountain
Haws



Novo Arch Bike Rack
Burke

Shoal Creek Neighborhood Park: Furnishings and Amenities



Pet Waste Station



3' Peeler Log Fence



4-6' Chainlink Fence



PS-022DF Playground Series Restroom
Public Restroom Company



Fitness Equipment
Landscape Structures



SQR 36 Square Shade Structure
Poligon

Shoal Creek Neighborhood Park: Furnishings and Amenities



Playground Equipment
Landscape Structures

Walden Neighborhood Park: General Development Plan

Picnic Area with Shade Structure

Playground

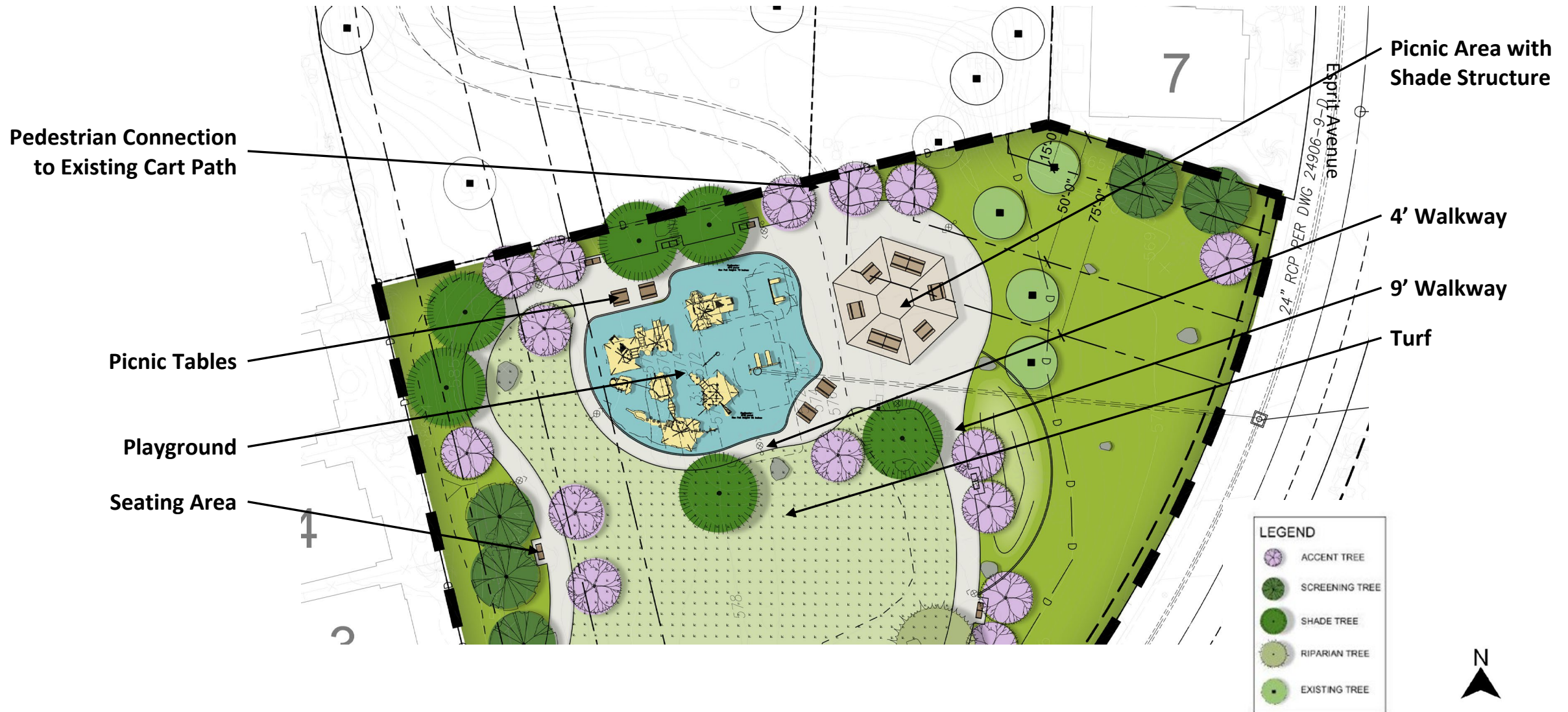
Turf



LEGEND	
	ACCENT TREE
	SCREENING TREE
	SHADE TREE
	RIPARIAN TREE
	EXISTING TREE



Walden Neighborhood Park: General Development Plan



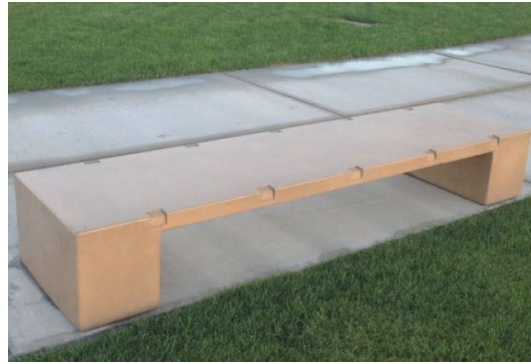
Walden Neighborhood Park: General Development Plan



Walden Neighborhood Park: Furnishings and Amenities



6' Picnic Table with Round Legs
92" Picnic Table with Round Legs
Outdoor Creations Inc.



420 – Block Leg Bench
Outdoor Creations Inc.



511 - Waste and Recycling Receptacle
Outdoor Creations Inc.



Model 3500D Water Fountain
Haws



300A - Family BBQ with
113 - Pedestal Table
Outdoor Creations Inc.



Novo Arch Bike Rack
Burke



Pet Waste Station



HEX 48 Shade Structure
Poligon

Walden Neighborhood Park: Furnishings and Amenities



Playground Equipment
Landscape Structures

Facilitated Discussion

Action Items:

1. Eastbourne Neighborhood Park General Development Plan
 2. Shoal Creek Neighborhood Park General Development Plan
 3. Walden Neighborhood Park General Development Plan
- Recommend approval
 - Not recommend approval
 - Recommend approval with modifications

GDP Process

