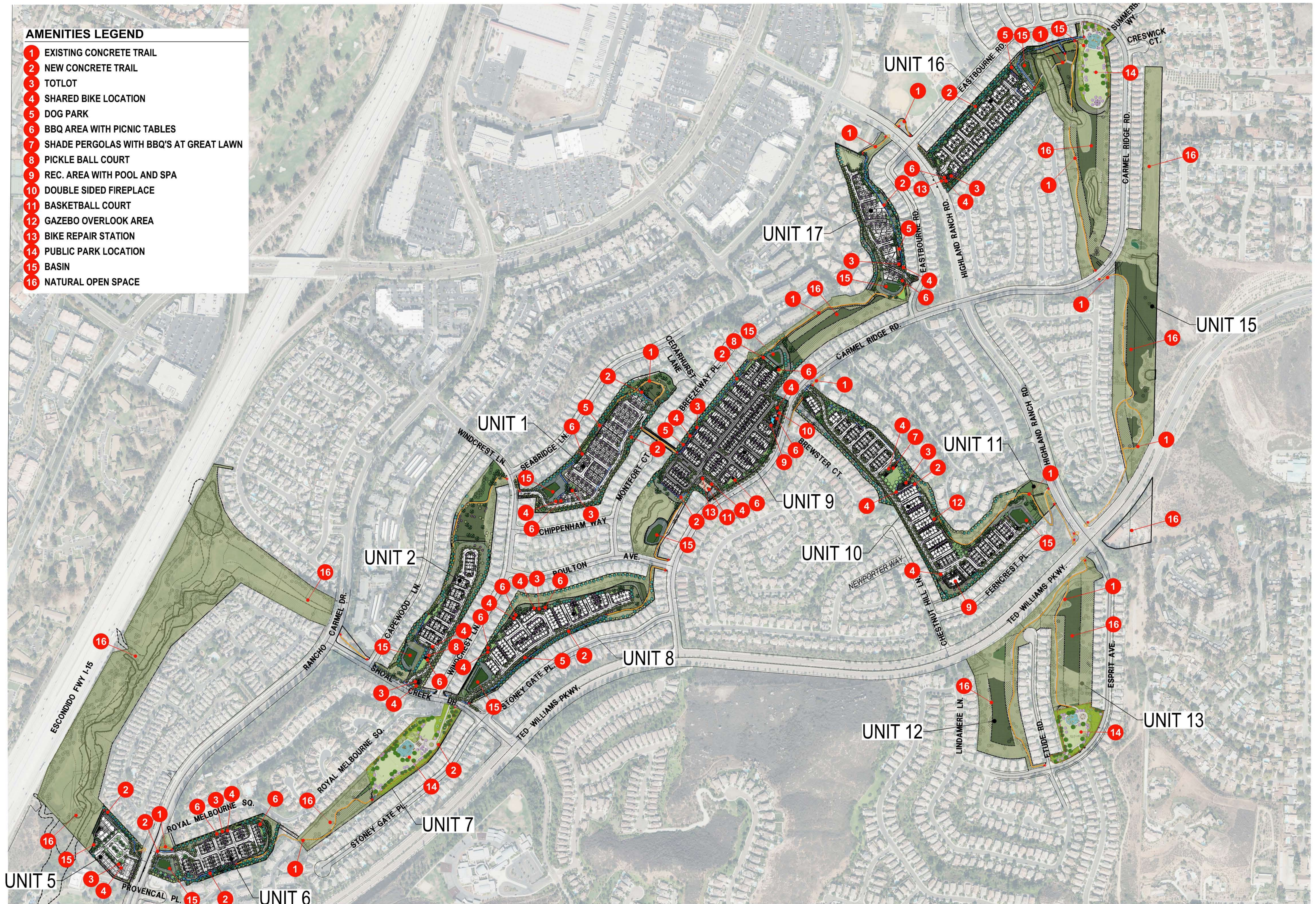


**AMENITIES LEGEND**

- 1 EXISTING CONCRETE TRAIL
- 2 NEW CONCRETE TRAIL
- 3 TOTLOT
- 4 SHARED BIKE LOCATION
- 5 DOG PARK
- 6 BBQ AREA WITH PICNIC TABLES
- 7 SHADE PERGOLAS WITH BBQ'S AT GREAT LAWN
- 8 PICKLE BALL COURT
- 9 REC. AREA WITH POOL AND SPA
- 10 DOUBLE SIDED FIREPLACE
- 11 BASKETBALL COURT
- 12 GAZEBO OVERLOOK AREA
- 13 BIKE REPAIR STATION
- 14 PUBLIC PARK LOCATION
- 15 BASIN
- 16 NATURAL OPEN SPACE



**TREES**



**SHRUBS**



**SHRUBS (CONT.)**



*Calycanthus occidentalis*  
Sage Bush



*Carissa macrocarpa* 'Tomlinson'  
Tomlinson Natal Plum



*Cistus x purpureus*  
Orchid Rose



*Coleonema p.* 'Aurea'  
Pink Breath of Heaven



*Cordylone* 'Red Sensation'  
Cordylone



*Dianella c.* 'Little Rev'  
Little Rev Flax Lily



*Diella bicolor*  
Forsyth Lily



*Eriogonum fasciculatum*  
Coastal Buckwheat



*Hesperaloe parviflora*  
Red Yucca



*Hesperaloe whipplei*  
Yucca Whipplei



*Heteromeles arbustifolia*  
Teyon



*Lantana c.* 'New Gold'  
Lantana New Gold



*Layia patylosa*  
TK Yips



*Leucadendron* 'Jester'  
Jester Conebush



*Leucophyllum c.* 'Thunder Cloud'  
Thunder Cloud Texas Sage



*Leymus c.* Canyon Pinco  
Native Blue Rye



*Ligustrum j.* 'Texanum'  
Texas Privet



*Lupinus succulentus*  
Arroyo Lupine



*Pachyocereus marginatus*  
Totem Pole Cactus



*Phormium x.* 'Maori Master'  
New Zealand Flax



*Phormium tenax*  
New Zealand Flax



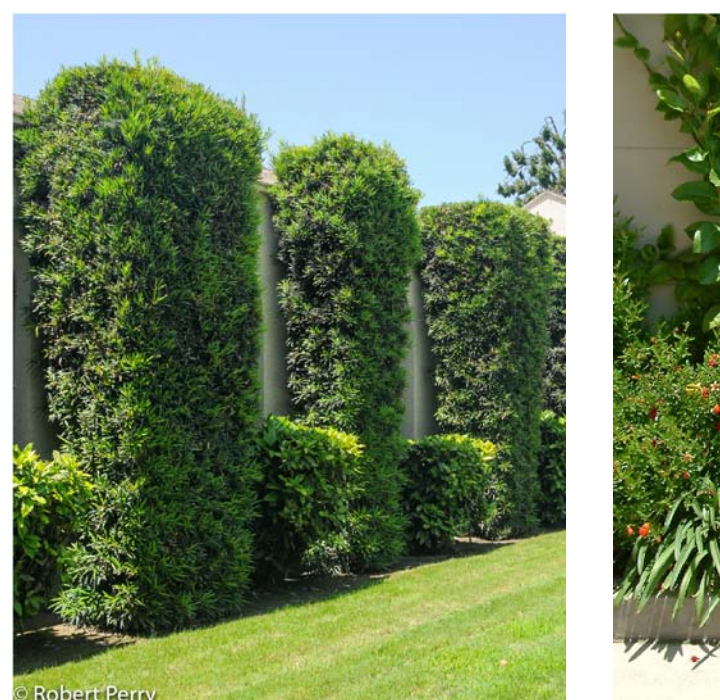
*Phoditis x fesseli*  
Fraser Phoditis



*Pitoporum l.* 'Silver Sheen'  
Silver Sheen Pitoporum



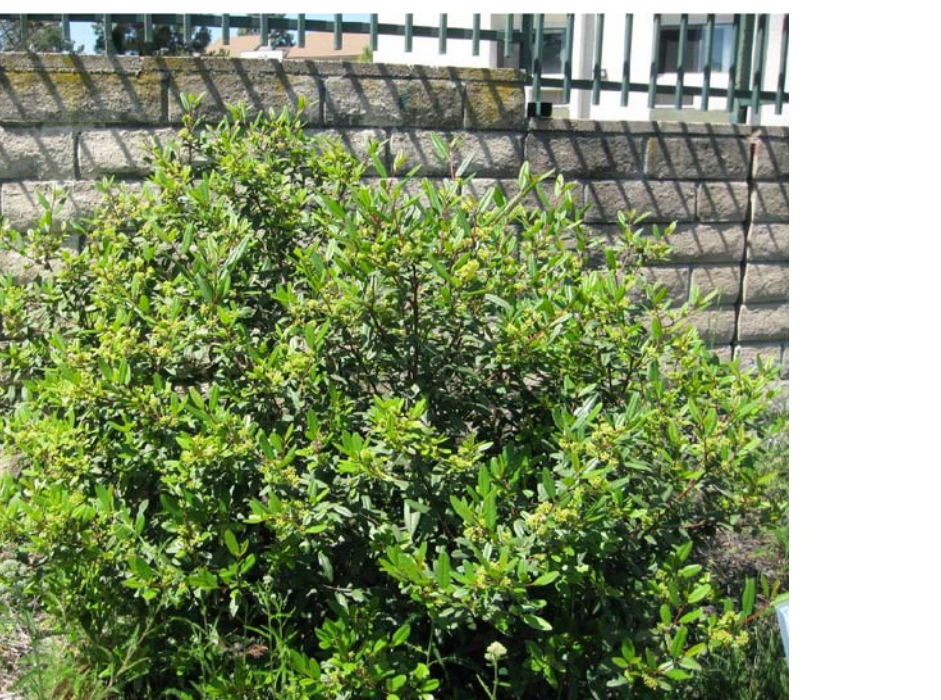
*Podocarpus m.* 'Maui'  
Shrubby Yew Pine



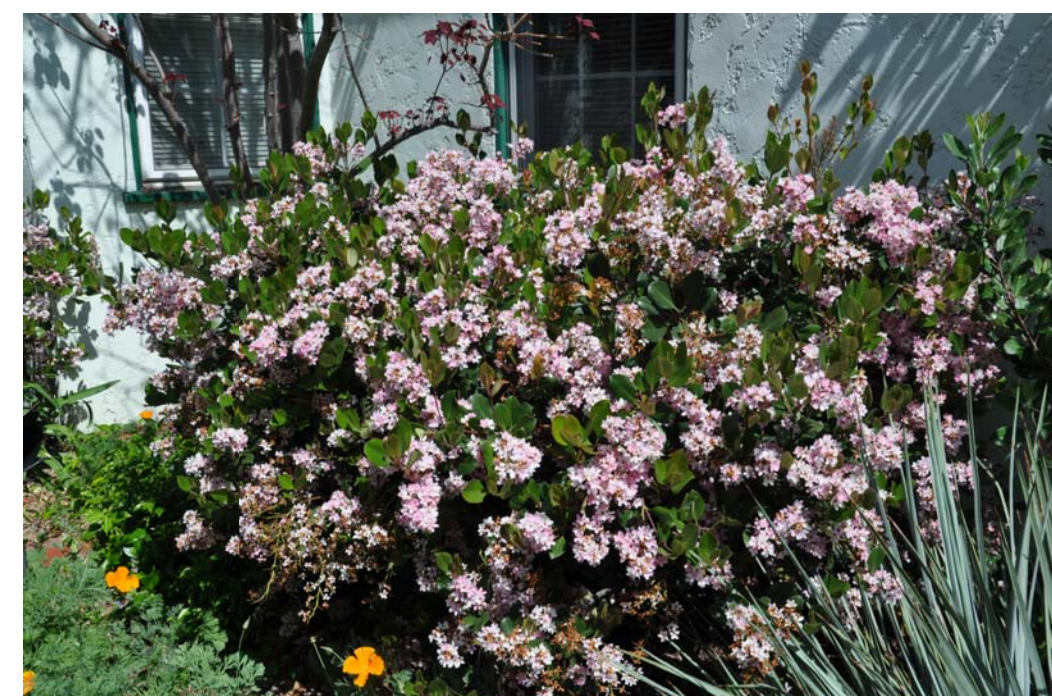
*Purica granatum* 'Nana'  
Dwarf Pomegranate



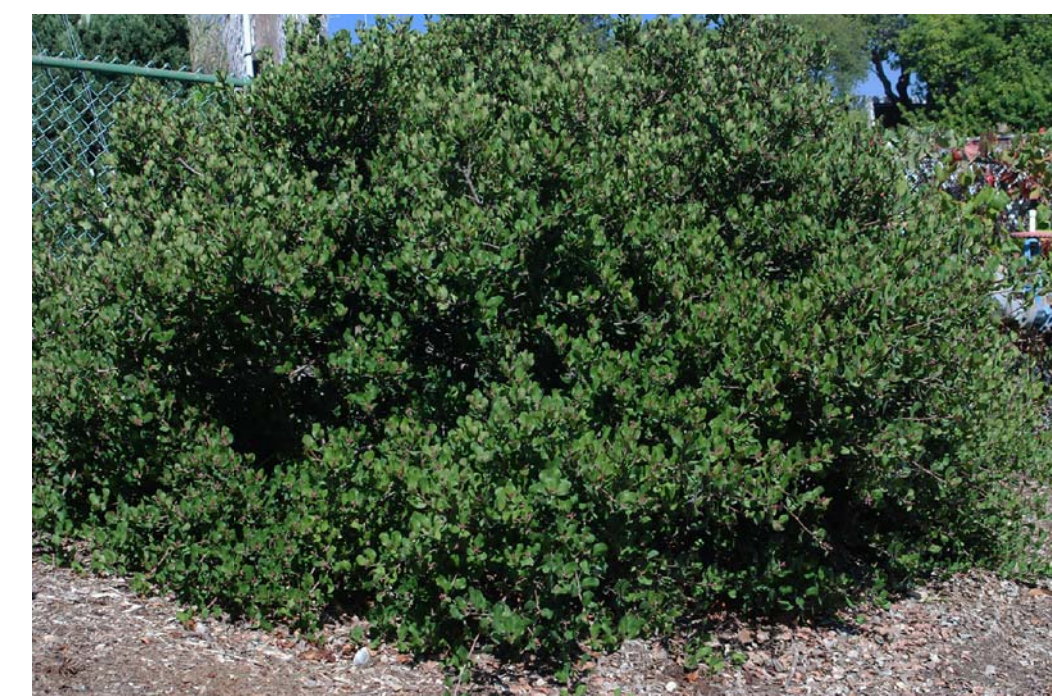
*Rhamnus californica*  
Coffeeberry



*Rhiphopileta l.* 'Jack Evans'  
Jack Evans Indian Hawthorn



*Rhus integrifolia*  
Lemonade Berry



*Ribes viburnifolium*  
Evergreen Currant



*Rosa californica*  
California Wild Rose



*Rosa x 'Noel'*  
Flower Carpet Red Rose



*Rosmarinus o.* 'Prostratus'  
Prostrate Rosemary



*Russelia equisetiformis*  
Firecracker Plant



*Salvia x 'Bees & Bills'*  
Bees & Bills Sage



*Streitzia reginae*  
Bird of Paradise



*Westringia fruticosa*  
Coast Rosemary



*Salvia x 'Bees & Bills'*  
Bees & Bills Sage

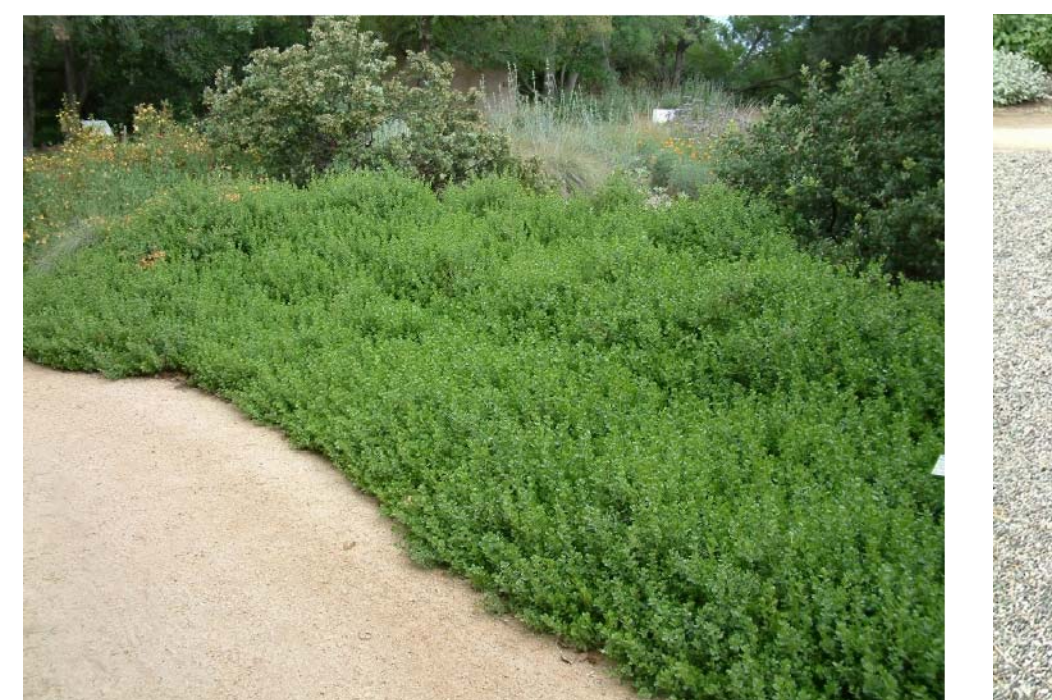


*Streitzia reginae*  
Bird of Paradise



*Westringia fruticosa*  
Coast Rosemary

**GROUNDCOVERS**



*Baccharis pilularis* 'Pigeon Point'  
Pigeon Point Coyote Bush



*Carex proserpicilis*  
Western Meadow Sedge



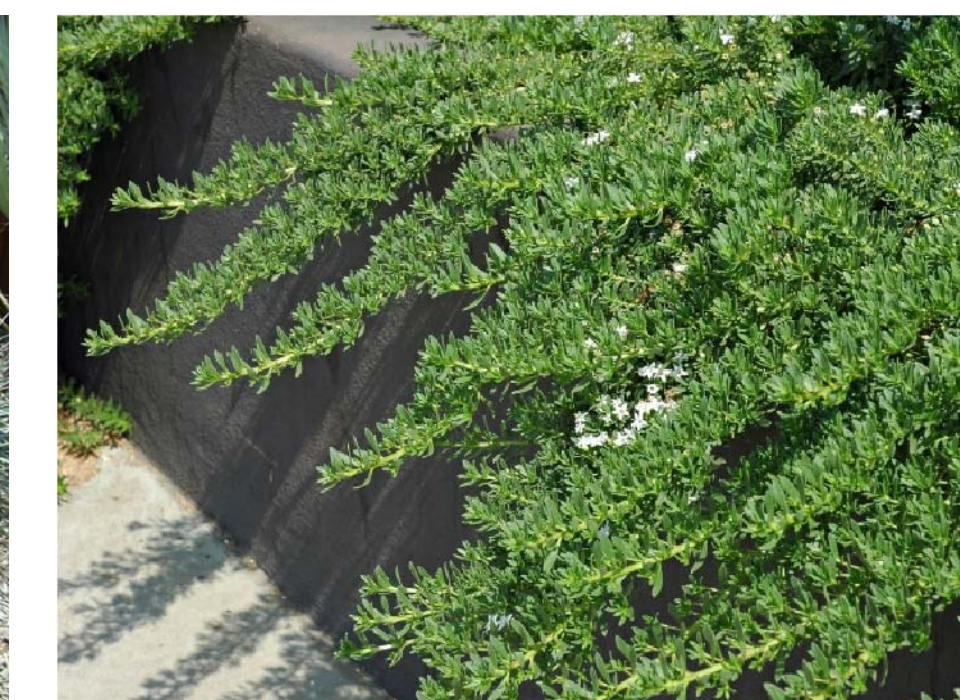
*Carex humilis*  
Berkeley Sedge



*Gazania x 'Burgundy'*  
Burgundy Gazania



*Leymus c.* 'Canyon Pinco'  
Canyon Pinco Wild Rye



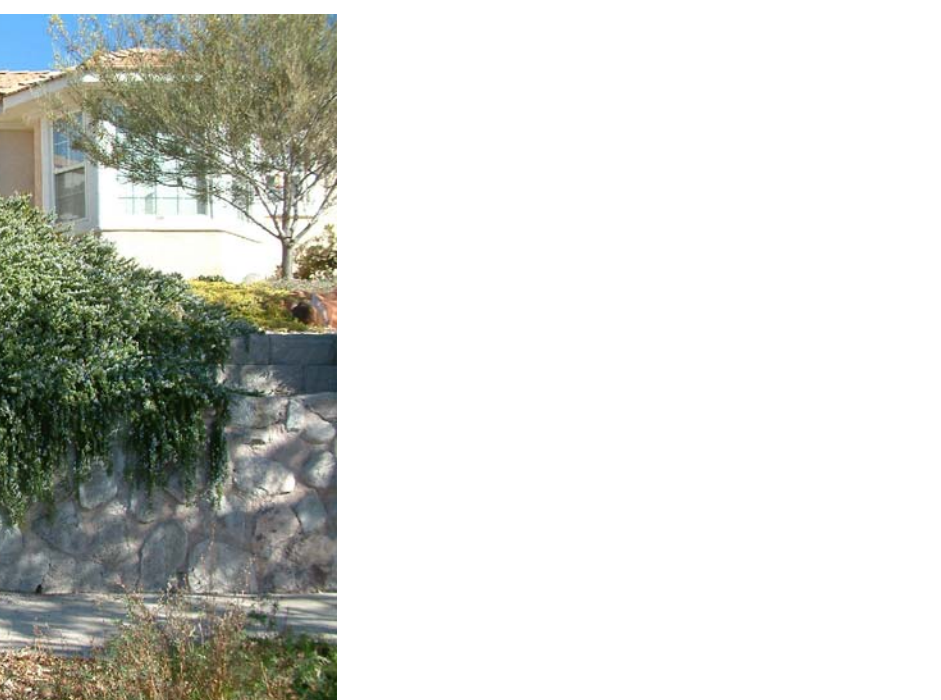
*Mynoporum paniculatum*  
Trailing Myoporum



*Rhus ovata*  
Sugar Bush



*Rosmarinus officinalis* 'Prostratus'  
Dwarf Rosemary



*Sarcobatus mundobaccata*  
Blue Chalk Stick



*Quercus dumosa*  
Coastal Scrub Oak



*Salvia c.* 'Allen Chisbretting'  
Allen Chisbretting Sage



*Salvia apiana*  
White Sage



*Salvia x 'Bees & Bills'*  
Bees & Bills Sage



*Tachydopogonum jasmirroides*  
Star Jasmine



Turf Marathon III  
Marathon III



Turf Marathon III  
Marathon III

**GRASSES**



Carex spicata  
San Diego Sedge



Festuca Californica  
California Fescue



Juncus Mexicanus  
Mexican Rush



Helictotrichon sempiternum  
Blue Oat Grass



Muhlenbergia c. Pink Cloud  
Pink Muhly



Muhlenbergia rigens  
Deer Grass

**VINES**



Ficus pumila  
Creeping Fig